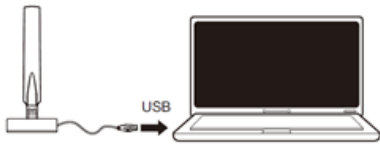


# Setting up the HP Prime Wireless Kit

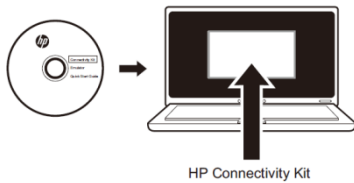


Getting your HP Prime Wireless Kit set up for classroom use is quick and easy. Please follow these steps to get started.



## Step 1

Plug in the HP Wireless Antenna via USB.



## Step 2

Install and run the HP Connectivity Kit.



## Step 3

Plug orange wireless modules into the HP Prime student calculators.



## Step 4

Tap on top right of calculator display and look for a wireless icon. Tap the wireless icon and select a network (students may do this as well).

*Set up is complete and student calculators will connect automatically to the network.*

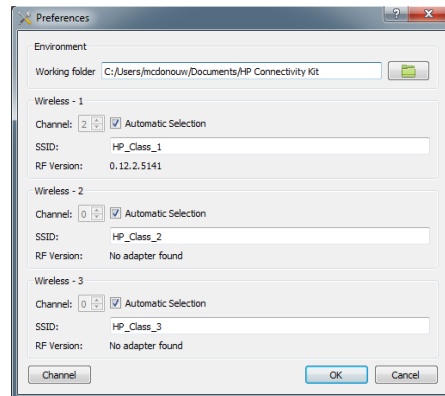
**Troubleshooting tips on back**

## Troubleshooting tips

### In the event that there is an issue with set up:



1. Confirm the Connectivity Kit can connect to the wireless antenna
  - a. Connect the antenna to a USB port. It is best to connect directly to a port on the computer rather than using a USB hub.
  - b. In the Conn Kit, go to Edit > Preferences
  - c. If the Conn Kit is able to connect to the antenna, an RF version number will be displayed. Otherwise the message “No adapter found” will appear next to “RF Version:”.



2. If the Conn Kit cannot connect to the antenna, confirm that a calculator can be connected by USB cable
  - a. Start the Conn Kit
  - b. Connect a USB cable to the computer and to a calculator
  - c. The calculator should appear in the Conn Kit.
3. If the Conn Kit cannot connect to a calculator by USB, then USB connections are probably blocked by IT policy.
  - a. The user should contact their IT department.
4. If the Conn Kit CAN connect to a calculator by USB but cannot connect to a wireless antenna, the antenna may be faulty (this is very unlikely as we have not seen this type of failure, but it is theoretically possible).

**For any questions or additional troubleshooting needs, please contact us at [calculators@hp.com](mailto:calculators@hp.com).**